



# SILVERWING

Specialist Inspection Equipment

Technology Driven  
Not Operator  
Dependent

DIGISCAN

Industry



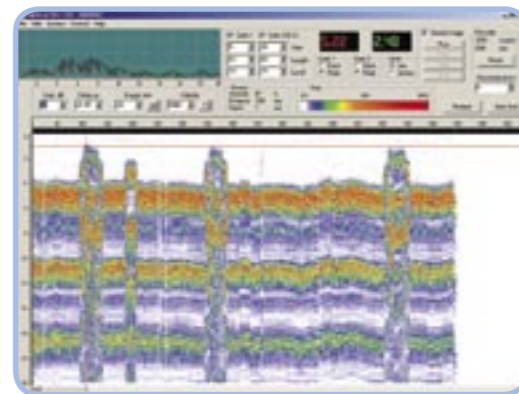
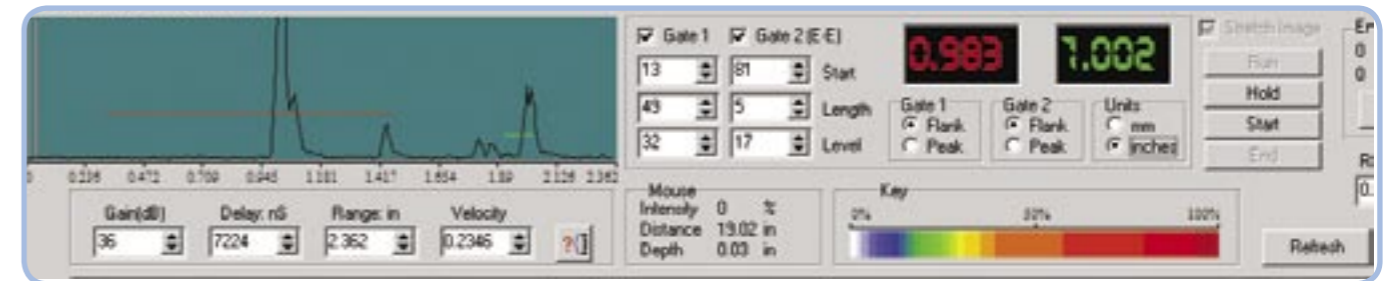
inspection equipment

petro-chemical industry

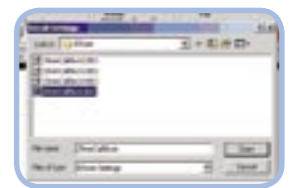
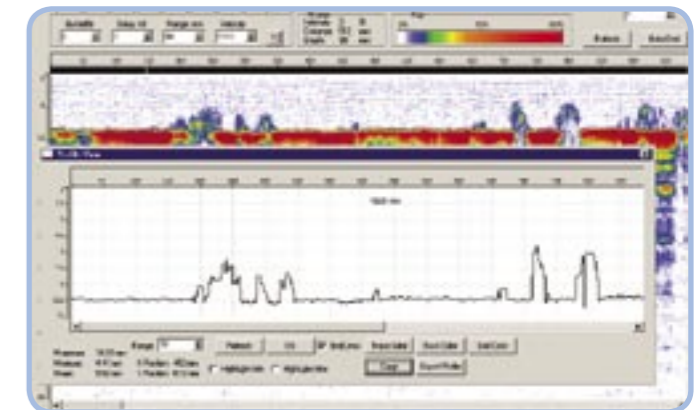
Digiscan is a unique manual B-scan system for plate and pipe developed by Silverwing (UK) Ltd.

Digiscan is a portable, battery operated PC based digital ultrasonic B-scan imaging system utilising the Silverwing UK Ltd dry coupled wheel probe. The lightweight battery operated system comes as a complete package with an adjustable manual scanner suitable for both plate and pipe to meet job related requirements.

The Digital Ultrasonic transmitter/receiver processes the UT signals from the dry coupled TWP12 dual wheel probe and combines the images with the encoder information. The Digiscan scanner is connected to the notebook computer (supplied) via the USB 2.0 port which can handle scanning speeds of upto 200mm/sec. The software has standard flaw detector controls for the A-scan set-up, simplifying training and operation requirements. All controls such as gain, time base range, filtering and gate adjustments are on the same screen as the active A-scan display and the B-scan image.



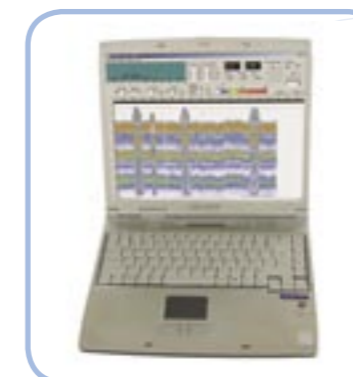
The easy to use defect sizing tools combined with cut and paste functions allow the export of defect images directly into other Windows software packages such as Word or Excel. These features turn the Digiscan from a simple corrosion detection device into one of the most cost effective, comprehensive Ultrasonic Imaging Systems on the market today.



Technical Specification

Dimensions	Length 207 mm x Width 76 mm x Height 125 mm
Weight without cables	650g
Drive	Manual
Umbilical Cable	length 5 metre
Transducer	Dry coupled wheel using "Ro-Cee" rubber 5 Mhz dual compression transducer
Power supply	14.4v NiMh 8Ah
System Case	Batteries, charger and digital computer interface fixed into case. Storage area for scanning unit

- **Battery operated**
- **Lightweight and portable**
- **Standard flaw detector controls**
- **Dry coupled ultrasonic wheel probe**



Notebook System Supplied

- Windows XP
- PC PIII 2GHz processor or better
- 256MB RAM or better
- 40GB Hard drive
- CD Rom
- SVGA 800 x 600 minimum resolution display

# Technology Driven Not Operator Dependent



Unit 6 Kingsway Business Centre

Swansea West Industrial Park

Swansea SA5 4DL

Wales, UK.

t: +44 (0) 1792 585533

f: +44 (0) 1792 586044

e: [mfl@silverwinguk.com](mailto:mfl@silverwinguk.com)

w: [www.silverwinguk.com](http://www.silverwinguk.com)