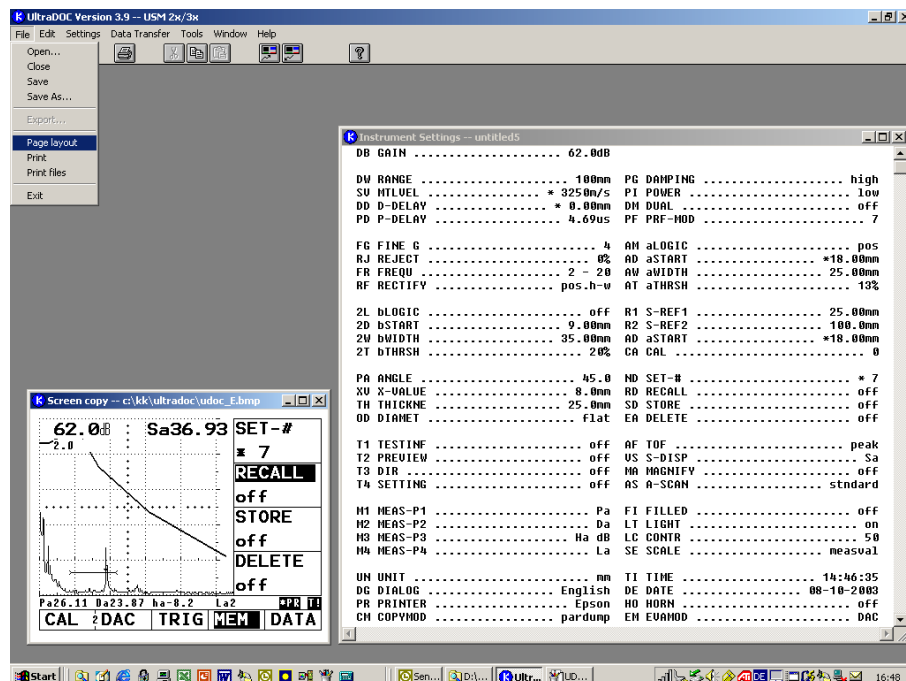


# Krautkramer UltraDOC

On the safe side  
with your documentation



The value of today's quality assurance tests depends on the quality of the corresponding documentation. You know the statutory provisions: in the case of damage, an objective proof of all measures that had been taken for the quality assurance of a product must be furnished.

Test instruments in combination with the UltraDOC software provide you with the required safety because UltraDOC makes the documentation process considerably easier.

UltraDOC allows you to transfer test data from the test instrument to the PC (for example parameter dumps, A-scans, menus) and to store them in usual data formats so that you will be able to further process them as you like. Word processing, DTP or spreadsheet programs - the whole world of EDP is at your feet.

You will have no trouble in creating your test reports and in carrying out the documentation of your test results quickly, reliably and conveniently.

Other documents, such as training documentation or re-research reports, can also be pre-sented in a professional way using UltraDOC. But UltraDOC has a lot more to offer: from the transfer of stored instrument calibrations back to the test instrument, through quick viewing of stored test data on the PC display, up to the remote control of the test instrument.

**By using UltraDOC you can:**

- transfer instrument settings from the test instrument to a PC, store them as ASCII text and further process them
- transfer any display contents of your choice, store them in IMG, BMP or PCX format and further process them
- store complete instrument settings and calibration tables and transfer them back to the testinstrument
- gain a quick overview of stored test data
- remote control your test instrument.

UltraDOC was developed for a great number of our flaw detectors and other test instruments having an RS232 interface. It is available as Windows version, it only requires standard computer systems, it is easy to install - and even easier to use.

